

# Tizen-based Samsung TV SDK IDE Guide

*This document is the user guide for the Tizen-based Samsung TV SDK IDE, which helps Tizen-based Samsung TV Application developers to understand and use the IDE in better way.*

## Contents

[Prerequisites](#)

[Creating web app templates and samples](#)

[Running web app in web simulator](#)

## Prerequisites

The required environment is as following :

For the operating system:

- Windows 7 (recommended), Windows XP service pack 2 or higher
- Linux (Ubuntu Recommended)
- Mac OS X

For the JDK:

- Oracle JDK 1.7 or above

For the Eclipse:

- Eclipse 3.7.2 Indigo

For Run App:

- Tizen TV Web Simulator Application (Samsung TV)

## Creating web app templates and samples

This session introduce a Tizen web app to demonstrate the creation processes by using **Tizen-based Samsung TV SDK**.

### 1. Creating the Project

After the Eclipse platform is launched, select the menu item **File -> New -> Project -> Tizen Web Project**. As it shown in Figure 1, select it and then click Next to start the wizard.

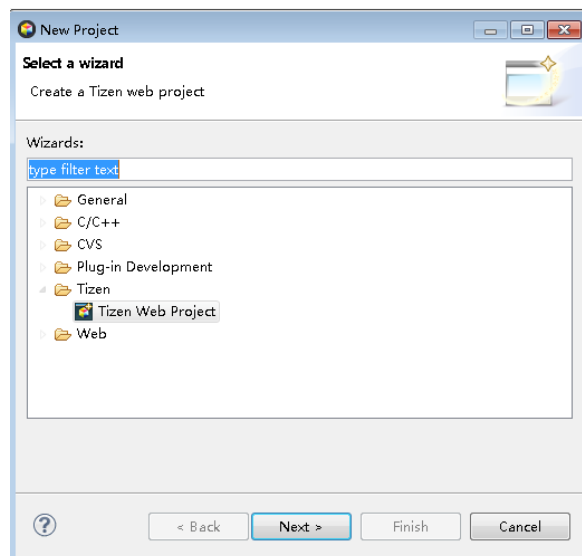


Figure 1: New Project Wizard

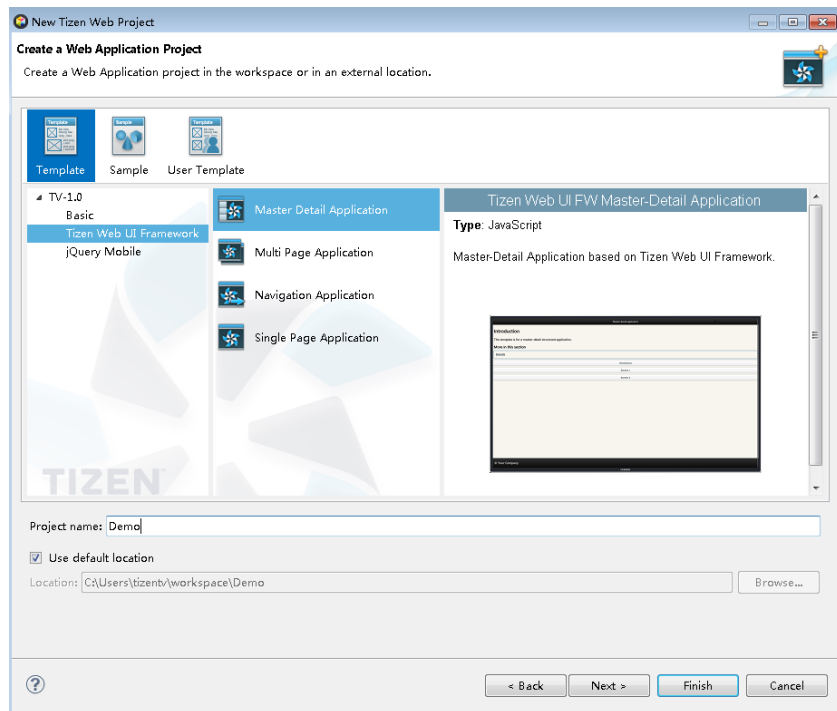


Figure 2: Tizen TV Web App Project Wizard

On this page (Figure 2)

- Select **TV-1.0 -> Tizen Web UI Framework-> Master Detail Application**.
- Input 'Demo' in the Project name field.

Then click Finish button.

## Running web app in web simulator

Choose this 'Demo' project in **Project Explorer**, popup the context menu, select the menu item **Run As -> Tizen TV Web Simulator Application (Samsung TV)**.

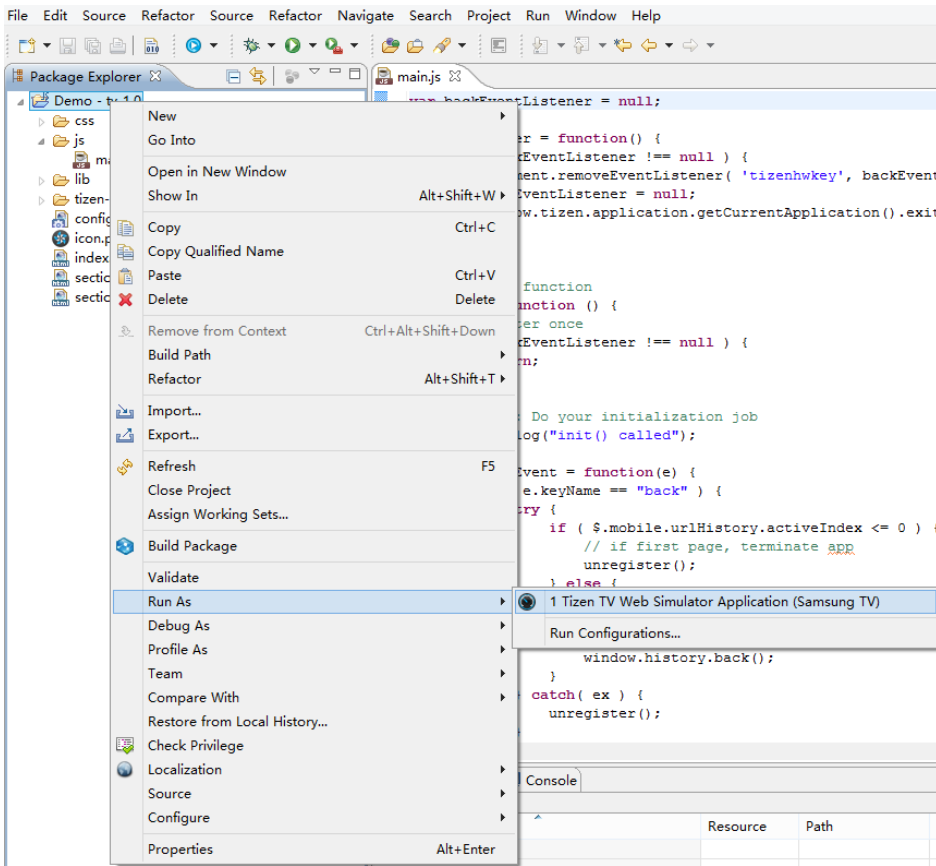


Figure 3: Run the app (step 1)

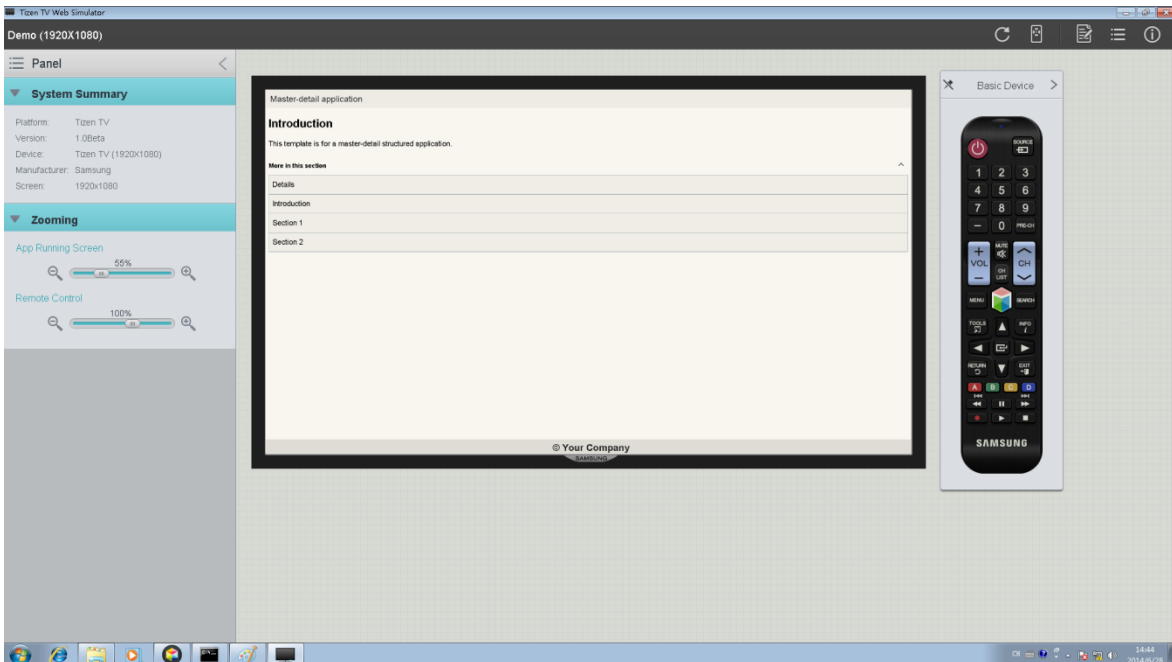


Figure 4: Show the app on simulator (step 2)